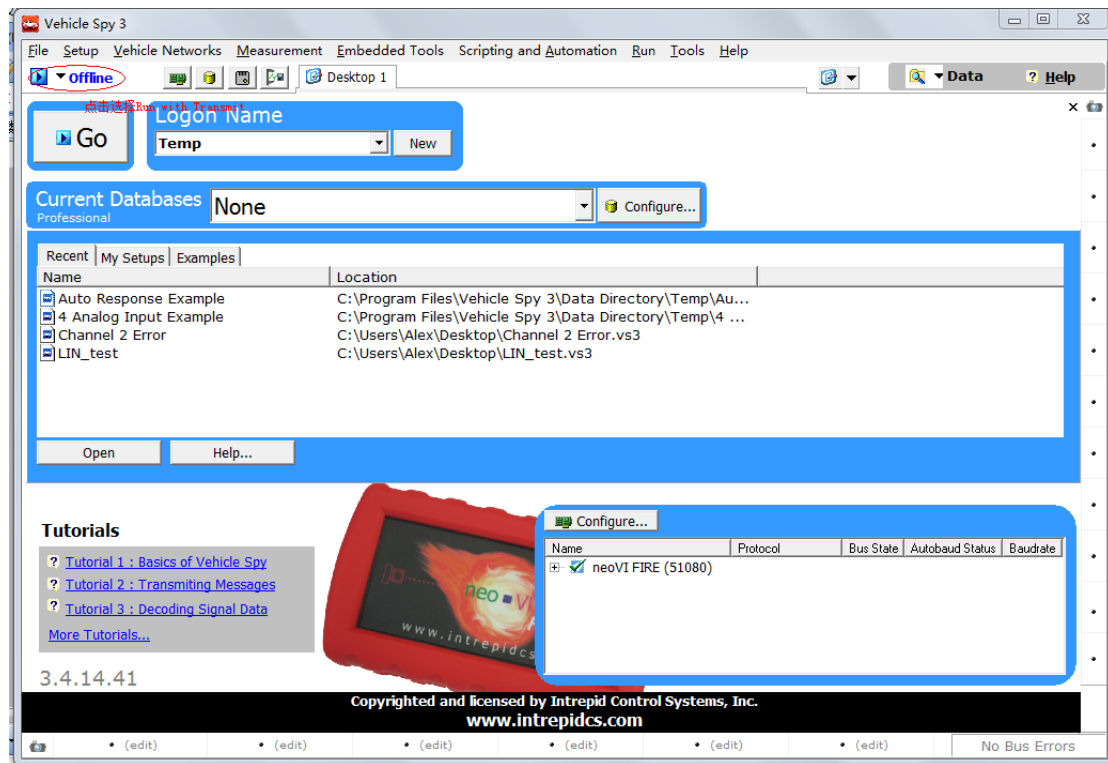





启动 VSPY，确保已经添加 License 文件，并且确保设备已经同网络正确连接。



点击  **Offline** 按钮，选择 Run With Transmit 模式，此时就能够看到 CAN 网络上的数据。



New Spy Setup - Vehicle Spy 3

File Setup Vehicle Networks Measurement Embedded Tools Scripting and Automation Run Tools Help

Online Desktop 1 Data Help

Messages Editor Messages Function Blocks

Filter Add

Networks

- HS CAN
- MS CAN
- SW CAN
- J1850 VPW
- ISO9141/KWZK
- LSFT CAN
- J1850 PWM
- J1708
- neoVI
- HS CAN2 (neoVI 3G)
- HS CAN3 (neoVI 3G)
- LIN2 (neoVI 3G)
- LIN3 (neoVI 3G)
- LIN4 (neoVI 3G)

Filter	Count	Time	Tx	Er	Description	Arbitr/Header	Len	DataBytes	Net
?	2226	11.959 ms			HS CAN \$110	110	8	00 0D A4 00 00 68 00 00	HS C
?	2226	11.959 ms			HS CAN \$120	120	8	03 42 63 20 04 71 03 20	HS C
?	2706	12.120 ms			HS CAN \$128	128	3	0E 00 01	HS C
?	144	200.787 ms			HS CAN \$130	130	4	00 00 00 4E	HS C
?	1280	21.108 ms			HS CAN \$140	140	6	07 CF 50 00 F8 80	HS C
?	1281	21.046 ms			HS CAN \$144	144	2	80 00	HS C
?	55	501.231 ms			HS CAN \$170	170	8	01 00 00 00 00 00 00 00	HS C
?	2718	8.949 ms			HS CAN \$180	180	4	60 00 F8 92	HS C
?	513	53.551 ms			HS CAN \$280	280	8	00 00 00 00 00 00 00 00	HS C
?	257	106.920 ms			HS CAN \$2F0	2F0	5	00 00 00 10 80	HS C
?	277	99.241 ms			HS CAN \$300	300	8	00 01 09 D8 50 00 00 00	HS C

Tx Panel

Edit Transmit Messages Disable A

Key	Description	Tx	Aut
out0	Tx Message HS CAN 1		Peric

Signals for Tx Message HS CAN 1

Key	Idx	Description	In	Dc	Step Size	Value	Raw Value
sig0	0	Signal 1	+	-	1	Sinusoid ...	10.20516175851141

Columns (default) Setup ...

SW CAN Errors